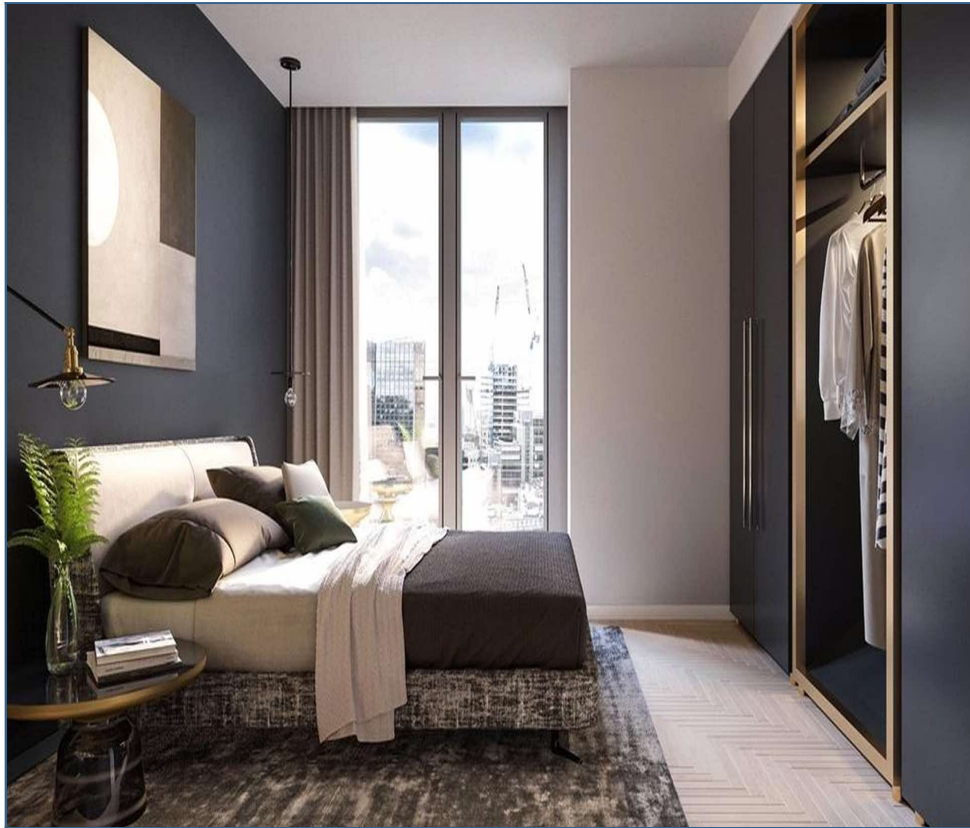


## For Sale Crown Place - One Bedroom Apartments - London City, UK



### Property Details

Price: €1,095,000

Type: Apartment

Bedrooms: 1

Bathrooms: 1

Build size: 577 m2

Plot size: m2

### Services

Gym

Balcony/terrace

PLEASE NOTE THAT THE PURCHASE PRICE IS GBP £1,095,000. WE ARE IN THE PROCESS OF REMOVING THE EUR €

.Crown Place is a residential complex with 246 apartments, consisting of two towers with a height of 28-33 floors. From the 1st to the 6th floor, there are offices and commercial space, as well as a hotel with five-star service operated by Bespoke Hotels. Apartments are placed from the 7th floor. The skyscrapers made of multicolored panels and glass were constructed according to the project of the world renowned architect Bowler James Brindley from KPF.

Crown Place offers 1, 2 and 3-bedroom apartments with private terraces or balconies. All apartments are finished in a modern style, and feature built-in furniture and equipped bathrooms. The kitchen has Italian-made Arclinea sets with integrated Siemens appliances, while the bedrooms have spacious fitted B&B Italia wardrobes. The design team includes interior architect Bowler James Brindley, and interior designer Sophie Ashby.

On the 7th floor, there is a gym, a treatment room, a lounge area with upholstered furniture and books. Fully equipped meeting room and a workhub allow residents to work right from their home. A friendly 24-hour concierge will help to book a private dining room with a wide oak table for a business lunch or a family dinner

### Amenities

- 24-hour concierge service
- 7th floor common area for residents which includes gym

- lounge
- workhub
- meeting room
- screening room
- private dining room
- treatment room
- communal terrace

## For Sale Crown Place - One Bedroom Apartments - London City, UK

